

# group travel sales manual





## Content

Good to know .....	2
Guided tours in Oberammergau.....	3
Sights in Oberammergau .....	4
Passion Play Theatre Oberammergau.....	4
House of Pontius Pilate.....	4
Passion Play 2022.....	5
Parish Church of St. Peter & Paul.....	5
Oberammergau Museum.....	5
Monastery Ettal, Distillery & Brewery .....	6
Chees dairy Ammergau Alps.....	7
Churches.....	8
Linderhof Palace & Neuschwanstein Castle.....	9
My special experiences .....	10
Ammergau Alps Meditation Trail & Meditative Hiking .....	12
Hikes, walks and more activities in Ammer valley.....	14
Places of excursions in the region.....	16
Garmisch-Partenkirchen.....	16
Murnau.....	16
Glentleiten Open Air Museum.....	17
Museum of violins in Mittenwald.....	17
Munich.....	17
Group Hotels.....	18
Information for bus drivers.....	21
Overview / Price group offers.....	22
Contact.....	24

## Imprint

Ammergau Alps GmbH  
Eugen-Papst-Str. 9a  
82487 Oberammergau

Tel.: +49 (0) 8822 / 922 740  
Fax: +49 (0) 8822 / 922 745  
info@ammergau-alpen.de  
www.ammergau-alpen.de

## Good to know

### Program elements and recommendations

The program elements listed as follows are a selection of our extensive choice of attractive and interesting offers for groups travelling in the Ammergau Alps Nature Park region and its surrounding.

The modules can be booked individually or arranged to form a complete travel program. We will be happy to support you in combining, planning, booking and carrying through of your group tour in the Ammergau Alps.  
All prices and information are subject to change.

### Your contact person for group travel:

Mareike Gallian  
phone + 49 (0) 8822 / 922 74-46  
sales@ammergau-alpen.de

Ammergau Alps Head Office  
phone + 49 (0) 8822 / 922 740  
info@ammergau-alpen.de



# // The classics //

## Guided tours in Oberammergau

It is the extraordinary people who have made Oberammergau to what it is today: a colorful blend of art, culture and tradition, a successful mixture of down-to-earth homeland ties and cosmopolitan hospitality. Masterful facade paintings emblazoned on the walls of the ancient houses, everywhere flourishing handicrafts. Cozy restaurants and cafes invite you to stop.

The painted house facades, called Lüftlmalerei in the Upper Bavarian area, go back to Italian models and had their heyday in southern German cities from the late 16th to the early 18th century. In the 18th century, this fashion also reached the foothills of the Alps, where wealthy traders, farmers and craftsmen displayed their wealth through lavishly painted facades.

It is not known when the people of Oberammergau began carving. The first written evidence is a letter from an Italian traveling salesman in 1520 who praised the artistry of the Oberammergau carvings. The abundance of wood, the location on the Venice-Augsburg long-distance trade route, and the proximity to the much-visited pilgrimage church of the Ettal monastery, where crucifixes and souvenirs were sold, allowed the wood carving industry to flourish in Oberammergau as early as the late Middle Ages. The carvings were created at home and were initially sold by peddlers in kiosks, but sales structures gradually emerged. In the 18th and 19th centuries, the Oberammergau publishers had commercial branches throughout Europe and America.

However, Oberammergau became world famous for its passion plays. At the beginning of this tradition there is a vow...and as early as 1634 the people of Oberammergau kept their promise. Since 1680, the game has been postponed until the 1900s, with repeated postponements due to wars, bans, lack of money and further pandemics. It was not possible to play in 2020 due to corona, and it was not until 2022 that the 42nd Passion Play could be held from mid-May to the beginning of October. The next time will hopefully take place again in 2030.

## Guided tours 2025

### **Oberammergau and its history**

Varied walk through Oberammergau with its Lüftl painting and wood carving art, visit to the magnificent parish church of St. Peter and Paul and a look into the auditorium of the Passion Theater. Duration: approx. 60 minutes.

Price per group up to a maximum of 30 people 120,00€ (without entrance fees)

### **Oberammergau and its Passion**

Guided tour of the Passion Theater with a slide show on a large screen with music and a backstage area with costumes and props from the last Passion Play.

Duration: approx. 60 minutes.

Price per group up to a maximum of 30 people 200,00€ (including free entry to the Oberammergau Museum without a guided tour)

Up to 15 people 80,00 € plus reduced entry per person

### **Oberammergau, its history and Passion**

Combined tour of the town and the Passion Theater

Duration: approx. 90 minutes.

Price per group up to a maximum of 30 people 220,00 € (including free entry to the Oberammergau Museum without a guided tour)

Up to 15 people 100,00 € plus reduced entry per person

### **Oberammergau - an artist village**

Guided tour of the Oberammergau Museum with a historical nativity scene collection, 500 years of wood carving and the history of handicrafts in Oberammergau

Duration: approx. 60 minutes.

Price per group up to a maximum of 30 people 200,00 €

Up to 15 people 80,00 € plus reduced entry per person

### **The Romans in Oberammergau**

Guided tour of the Romans and Rhaetians in the early history exhibition in the Oberammergau Museum with a hike to the site of the discovery, a Rhaetian sanctuary on the Döttenbichl

Duration: approx. 120 minutes.

Price per group up to a maximum of 30 people 220,00 €

Up to 15 people 100,00 € plus reduced entry per person

### **Church tour of the parish church of St. Peter an Paul Spiritual church leadership**

Duration: 45 min

Price per group up to a maximum of 30 people 80,00 €

### **Class-offers on request.**

Max. 30 persons per group





# //Sights in Oberammergau//

## Passion Play Theatre Oberammergau

The history of the Oberammergau Passion Play began in the middle of the Thirty Years' War when the plague reached Oberammergau. In 1633, hoping for God's help, the community leaders vowed to "hold the Passion tragedy every ten years" if the village was freed from the plague. The epidemic came to a halt and the promise was fulfilled for the first time in 1634. The first performances took place on a simple wooden structure in the cemetery next to the parish church, and the site of today's theater has served as the venue since 1830.

Visit to the exhibition on the history of the Passion Play in the foyer of the theater and guided tours of the theater possible including the backstage area.

### Opening hours:

Tue. to So. 10:00 am - 5:00 pm from 21. Dec. 2024 - 06. Jan. 2025 and from 12. Apr. 2025 - 09. Nov. 2025

On public holidays also opened on Mondays.

On 24. Dec. and 1. Jan. closed.

Group tours during closing times on request!

More information about group tours on page 3!

## House of Pontius Pilate

The building, which got its impressive name from the facade paintings at the garden side of the house, is known as the most famous work of the Oberammergau fresco painter Franz Seraph Zwinck (1784). It shows two henchmen bringing the captive Jesus in front of the Roman proconsul Pontius Pilate. The scene of the rising of Christ can be seen on the street front. This wall, as well as the garden wall, is dominated by a magnificent architecture painting.

## "Living Workstudio"

In Oberammergau is the "Living Workstudio", where you can watch artists at work and ask questions about their art.

### Opening hours: (attention relocation)

accurate opening times not known yet, season: daily from 01:00 - 6:00 pm opened, closed on Monday

Dorfstraße 20

82487 Oberammergau

**Group info:** On holidays opened also on Monday, admission free







## Oberammergau Passion Play 2030

From 14. May to 02. October 2022 the 42<sup>nd</sup> Passion Play took place in Oberammergau.

### Further Information:

The next passion play will take place in 2030.



### Contact for groups:

Passionsspiele Oberammergau Vertriebs GmbH & Co. KG  
phone: +49 (0) 8822 / 949 8877  
support@oberammergau.de



## Parish Church St. Peter und Paul

The original church had a timber structure which was so damaged by the beginning of the 18<sup>th</sup> century that a complete rebuilding was necessary. The creation of the new building, in the rococo style, was supervised by Josef Schmuzer. His son Franz Xaver was the stuccoworker. The right side altar shows a particular cross. It is said to be the cross in front of that the Oberammergau villagers took their "passion play vow" in the plague year 1633. It shows Christ on the Cross with Mary and John as well as "good slaughterer" Dismas and Mary Magdalene.

### Opening hours:

opened daily from 7:30 am to 6:00 pm

### Group info:

For spiritual and art-historical group tours see page 3!



## Oberammergau Museum

### Opening hours:

On public holidays also opened on Mondays.

Tue to Sun 10:00 am - 05:00 pm from 12. Apr. - 09. Nov. 2025 and from 29. Nov. 2025 - 06. Jan. 2025

Closed on 24. Dec 24 and 01. Jan 2024

### Group info:

Group tours on request!

More Information about group tours on page 3!

# //Sights in Ettal//

## Monastical Brewery and Brewery Museum in Ettal

The tradition of brewing beer in Ettal is already over 400 years old. Originally brewed for the needs of the monks and pilgrims, the Ettaler Klosterbier (monastery beer) now enjoys increasing popularity, both at home and abroad. The 500-square-meter large brewery museum shows the exciting time journey through the changing history of beer brewing with historical equipment and documents from four centuries.

**Tours every week:**

monastery Mon and Thur	15:00 Uhr
distillery Mon and Thur	16:00 Uhr
brewery Tu and Fri	15:00 Uhr

**Group Info:** guided tour through brewery and brewery museum  
Duration: 60 mins incl. beer tasting (alcohol-free drinks for children and teenagers)  
Group size: 20 - 50 persons  
Price: 12,00 € p. p.  
Content of the tour: History of the monastery and the brewery, history of beer, process of brewing, selected samples of the museum, actual speciality beers and their production.  
A small tasting session is held during the tour.

**Please note:** The Brewery is not accessible for people with impaired mobility.

## The Monastical Distillery

Medieval monks were experts in gathering together healing plants and raising them in their own herbal gardens. In the skilled hands of the monastery pharmacist, these plants yielded secret formulas that healed ill monks and gave new strength to ailing pilgrims. As in the olden days, the destillateur, Brother Vitalis, uses more than 50 selected herbs to prepare the world-famous Ettal Abbey liqueurs. Even today recipes are kept top secret. We invite you to sample these exquisite liqueurs in the herb-, maceration- and distillation-rooms.

**Group info:**  
Guided tour of the distillery with liqueur tasting. Duration: about 60 mins,  
Group size: 20 - 60 persons,  
Price: 9,00 € p.p.

## Ettal Monastery

Ever since the Holy Roman Emperor Ludwig "the Bavarian" founded the monastery in 1330, Ettal Monastery has been the cultural centre of the Ammer Valley.

In its original Gothic form with later Baroque embellishments, the basilica at the heart of the monastery complex is unusual and unparalleled. The powerful Baroque dome crowns one of the masterpieces of Bavarian Rococo.

In Ettal the monks live and work in accordance with the Holy Rule of St. Benedict. Along with spiritual guidance, they run not only a state-approved secondary school but also among others the abbey hotel "Ludwig der Bayer", the monastic agriculture and forestry business, a publishing company and a market shop.

**Group Info:** Duration: approx. 30 - 45 mins,  
Group size: 20 - 80 persons,  
Price: 5,00 € p.p.  
The basilica is in summer time opened from 08:00 am - 07:45 pm  
and in the winter time from 08:00 am - 06:00 pm  
**All guided tours on request.**

**Tip:** A combined booking at the Klosterhotel "Ludwig der Bayer" will obtain reductions for guided tours at Ettal monastery.





## Ammergau Alps cheese dairy in Ettal

36 regional farmers and the monastical farm business are working together to produce healthy milk products and local cheese from the milk of their cows. In the Ammergau Alps cheese dairy, you can learn how Ammergau cheese is produced. Due to large observation windows visitors stand almost in the midst of the ultra-modern cheese production equipment. A visit to the idyllically situated cheese dairy becomes an entertaining experience.

Tip: Tasty cheese, sandwiches and cakes to go. All are all subject to strict guidelines and free of genetic engineering.

Here you can find the current opening hours  
[www.schaukaeserei-ettal.de](http://www.schaukaeserei-ettal.de)



## Pilgrimage Church of the Scourged Saviour

Visitors spotting the "Wies Church" for the first time, with no previous knowledge about the church, may well stand in awe and ask themselves what could have possibly given rise to the building of such an unusually magnificent church in such a secluded place.

After the miracle of June 14, 1738, when tears were seen on the face of the figure of the Scourged Saviour, a pilgrimage of unexpected proportions rapidly developed. The pilgrimage has remained alive up to the present. In the 18<sup>th</sup> Century the Wies Church was already known throughout Europe as a place of reverence for the Scourged Saviour, and at the same time a famous gem of baroque architecture. The pilgrimage church of Wies was given international recognition a few years ago, when it was inscribed by UNESCO, the culture organization of the U.N., as a cultural site on the World Heritage List.

**Group info:** Guided tours for groups up from 12 persons on request: Mon - Sat 11:00 am, 2:30 pm or 4:30 pm, Duration: about 30 mins  
Groups have the ability to hold its own service.  
Price: 6,00 € p.P.



## Monastical church Rottenbuch

The monastery Rottenbuch is a former Augustinian monastery. From the soon after the foundation built church, the basilica scheme was conserved, although the architecture of the church has been changed significantly during the 18<sup>th</sup> century by the stuccoworker Josef Schmuzer from Wessobrunn. Unusually for the Bavarian region are the construction of a crossing transept and the exemption of the tower. The frescoes in the interior are among the best works by Matthäus Günther. The rich stucco seems to displace all other forms of architecture, the idea of the Bavarian rococo church is optimally realized.

### Group info:

Guided tours bookable at church office opening hours:  
Tue - Thu 8.30 am - 11.30 am and Fri 2:00 pm - 5:00 pm

Duration: approx. 45 mins

Organ tours available: approx. 30 mins

by appointment: 08867/1008





# “Churches and Castles”

## Neuschwanstein Castle

Neuschwanstein Castle, one of the most popular of all the palaces and castles in Europe, was commissioned by King Ludwig II. in 1868 as a second dream- and fairy-tale castle in the Ammergau Alps near Füssen. Neuschwanstein Castle was opened to the public in 1886 only seven weeks after the King's death and ever since then has provided a fascinating insight into the world of Ludwig II., the fairy-tale king. Its spectacular location has also helped this fascinating work of art to attract more than a million visitors annually. Come and be swirled up in a royal fairy-tale world.

**Group info:** Duration: approx. 1.5 hrs (including trip to the castle by shuttle bus/carriage/on foot, castle tour approx. 30 min.), Visit only as part of a guided tour.

### Opening hours:

Open daily 01. Mar to 15. Oct.: 9:00 am - 6:00 pm,  
16 Oct. to 30. Mar.: 10:00 am - 4:00 pm,  
closed on 01. Jan., 24., 25. and 31. Dec.



## Linderhof Palace - The king's favourite palace

Originally this was a small and isolated building which King Max II. noticed while hunting in Ammerwald forest. The King's son, Crown Prince Ludwig, soon was enchanted by the magic of the picturesque Graswang Valley, and after the death of his father, he had the hunting lodge redesigned to a small palace, modeled on a French palais.

Find out more about the palace and its peculiarities, such as the king's „wishing table“, in one of the regular guided tours. In addition to the luxurious rooms of the palace, you will also want to explore the park with its fascinating park buildings. Various theme tours of the palace and grounds provide interesting facts and introduce you to the numerous myths that surround Linderhof Palace and the man who built it.

**Attention: The artificial Venus Grotto with a waterfall and lake is closed caused of restoration until 2025.**

On the way to the castle the Royal Lodge is situated on the left side. The exhibition shows the prehistory of the farmstead, the use of the Royal Lodge by the House of Wittelsbach and its importance as planning office for the royal castle.

**Group info:** Visit only as part of a guided tour.

In winter (until 14.04.): Visit to the castle, duration approx. 25 mins

In summer (from 15.04.): Visit to the castle (replacement for closed Venus grotto), duration approx. 25 mins for each

Reservations for groups are available at an additional cost.

**Opening hours:** daily from 01. May - 15. Oct.: 9:00 am - 6:00 pm, 16 Oct. - 30. March: 10:00 am - 4:00 pm  
Closed on 01. Jan., 24., 25. and 31. Dec.

**Large fountain in front of the palace:** Mid-April to mid-October: daily 9:00 am - 6:00 pm; every half hour.







# // Special experiences //

Our region has a lot to offer...

...beautiful nature, great  
history and unique people.

We will be happy to organize for your  
group tailor-made programs, guided tours,  
events and much more!



## Our suggestions for you:

### Watch soap production live at soap manufactory Wurm

The soap manufactory Wurm in Saulgrub produces cold-stirred natural soaps, other cosmetic products and mixes together its own tea blends by hand. Because soap is absorbed through the skin, very high hygiene requirements apply. But visitors can be as close as possible to the production of the soaps behind a panoramic window. The production takes place behind the window in so-called clean rooms.

The demonstration will be accompanied by a soap expert who will guide you through the world of soaps with captivating stories.

**Group info:** Guided tours for groups of up to 20 people on request, duration: approx. 30 - 45 mins, combination offer with a stop in the in-house café is possible

### "Schnürlkasperl" Jumping Jack

The little jumping jacks, the "Schnürlkasperl" are more than just an old-fashioned toy that has been made since the 18th and 19th centuries. They are considered typical for Oberammergau and are widely known. Experience how the little figures were made and visit the workshop in Oberammergau!

### Distillery tour

in one of the oldest distilleries of Bavaria, in the "Jägerjörgl" estate in Bad Kohlgrub. In 1 to 1.5 hours you will learn more about the production and the history of the distillation. (For groups of 10 persons or more.)

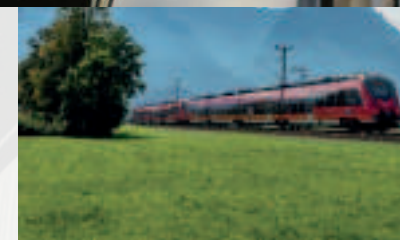
**Archery, cooking lessons,  
wood carving courses,  
local live brass music for your dinner,...**

All this and **much more** can be experienced and discovered in the Ammergau Alps Nature Park. Tell us your ideas and we will help you to fulfill them.

The trip will be remembered by your group for a long time!



**If your guests have time for own disposal, we recommend our offer of climate-friendly transportation.**





# // Pilgrimage and spiritual hiking //

Hiking and meditation - two things that can be combined perfectly. From the Wieskirche in Steingarden, the Ammergau Alps meditation path leads over 15 stations to Linderhof Castle in the Graswangtal Ettal. In 2019 the meditation path celebrates its 10th anniversary! The meditation path takes you through the lovely Ammertal to places of power that invite you to send your spirit on a journey. You will immerse yourself in history and discover the roots of the places and get to know each one yourself. In the evenness of your walking you will find inner peace on the meditation path, switch off Everyday life and just be yourself.



- The individual stages on the Ammergau Alps meditation trail are between 1 km and 10 km long. This ensures that you can easily hike the individual routes in a day tour. Of course, there are several stages connect easily. This means that everyone can take on the path as a whole, depending on their endurance, time and inspiration or pick out parts. **Group information:** the entire meditation path can be hiked in a 5-7 day tour. A day hike can also be integrated into your program or individual leisure activities. Guided multiday tours and day tours with hiking guides possible on request maximum 15 participants [www.meditationsweg.bayern](http://www.meditationsweg.bayern)





# // Museums in the naturepark //

## **Bierlinghouse Bad Bayersoien**

For 250 years, the Bierling merchant family was the most important family in Bad Bayersoien and provided for the surrounding area Population with salt and other trade goods. The Museum in the former Bierling department store, the almost completely preserved living quarters show the family's life, but also the hardships Exhibits on local history and equipment have long been available past craft guilds based in Bad Bayersoien.

### **Group information:**

Tour dates for groups on request by tel 08845-7030620, duration: approx. 45 minutes.

## **Reptilehouse Oberammergau**

45 different species of reptiles, amphibians and arachnids live on 150 qm. Visitors get an educational experience Insight into the loves of these fascinating animals, some of wich with hers the owner, the expert Thomas Lücke, has even appeared in front of the camera for TV productions.

### **Group information:**

Tour dates on request, prices for groups from 10 people: €5,00 for children up to 13 years, €7,50 for adults, Duration: approx. 45 minutes ([www.reptilien-haus.de](http://www.reptilien-haus.de)).

## **Village Museum Unterammergau**

The village museum run by the Historical Working Group e.V., sees itself as local history museum that rteflects the extensive village history. The production is particularly detailed and the international trade in whetstones explains the have had a strong influence on the town of Unterammergau.

### **Group information:**

From End of May to beginning of October on Sunday (3:00 p.m. to 7:00 p.m.). Tour appointments are also possible at other times upon request. Duration: approx. 60 minutes ([www.hak-unterammergau.de](http://www.hak-unterammergau.de)).

## **mSE Art Hall Unterammergau**

The mSE Art Hall is a museum for contemporary art Entrepreneur Christian Zott on the outskirts of Unterammergau. In addition to the permanent exhibitions "KAİROS. The right moment". There are works by Wolfgang Beltracchi and Mauro Fiorese Sculpture gardeb with a view over the Pulvermoos. Belongs to the facility the Hieronymus restaurant next door.

### **Group information:**

Entrace fee €9,50 each Person, curator tour €150,00 plus tickets, appointments on request, duration approx. 80 minutes ([www.mse-kunst-halle.de](http://www.mse-kunst-halle.de)):

## **Kraftwerk Kammerl Saulgrub**

The power plant was built between 1897 and 1899 to supply elcetricity to the Passionspielbahn and the surrounding towns. The former machine hall with the historic turbines and Generator sets were shut down in 2012 and replaced with a modern Power plant replaced in a neighboring new building. ([www.historisches-bahnwasserkraftwerk-kammerl.de](http://www.historisches-bahnwasserkraftwerk-kammerl.de))





# // Nature Park activities //

Hikes, Walks and further outdoor programs

## Walk: Crucifixion Group Monument

In 1871, the people of Oberammergau staged a special production of the Passion Play in honour of King Ludwig II. The King was so enthused by the performance that he donated this marble Monument of Crucifixion to the town as a token of his appreciation. It displays the crucifixion scene with Mother Mary and the disciple John. The king himself decided on this location, as approaching visitors could see it perfectly from all sides. From up here the view over the whole of the Ammer Valley is marvellous. The inauguration took place on October 15<sup>th</sup>, 1875, here at the Osterbichl in the presence of His Majesty.

**Group info:** Duration: from Oberammergau to the monument and return: about 1.5 hours by foot.

## Guided Tours

### Torchlight walks:

in winter e.g. B. around the Soer See or to Schleifmühlklamm in Unterammergau or in Bad Kohlgrub

### RadKultours:

Bookable on request from May 2025.

On **Tuesdays** we go on the **moor tour**: on paths through the high moor landscape around the two moor baths **Bad Bayer-soien** an **Bad Kohlgrub**





## ...even more outdoor suggestions

The Ammergauer Alps naturepark region offers many opportunities for hikes and Cycling tours of different level of difficulty.

Larger groups can also rent touring bikes or e-bikes by prior arrangement-

Further bookable activity offers for groups:

- Guided crosscountry skiing tours
- Winter and snowshoe hikes
- Nordic walking
- Segway tours
- Yoga and meditation
- Forest bathing
- Alpaca hikes
- Curling in winter (on asphalt in summer)

### **Rides in the mountain railway.**

All cable cars offer the opportunity to take a leisurely break at the mountain station:

- Lager mountain railway (cabin lift) in Oberammergau (approx. 1.684m).
- Double chairlift to the Kolbensattel in Oberammergau (approx. 1.270m).
- Downwards offers alternatively, take a fast ride on the "Alpine Coaster" summer toboggan run.
- Hörnle suspension railway (chairlift) to the Hörnle in Bad Kohlgrub (approx. 1.380m).

### **Peat cutting in Bad Bayersoien**

Mid June to mid September. After a hike to the old peat cut, you will find out Participants explained how the 10.000 year old moor came to be and what it is still used for today- An ideal addition to the Bad Kohlgruber Moor Nature Trail.

### **Sage bubbles at Soier See**

Listen to the romantic tunes during a walk along the Soier See Musicians from the water (fixed dates from May to September).



# // Excursions in the region //

## Garmisch-Partenkirchen

Unique in all facets: With its location amidst breathtaking mountain scenery at the foot of the 2,962 meter high Zugspitze, Garmisch-Partenkirchen is the epitome of enormous, pristine alpine nature.

Anyone who arrives on the Zugspitze with the Zugspitze cable car or the cog railway can expect a breathtaking 360-degree panorama with around 400 peaks all around. The tour makes it possible to stay at the Zugspitzplatt and an impressive ride on the glacier cable car. An almost awe-inspiring setting where outdoor activities become a unique experience – and that between mountain and valley, in the water and in the air.

Garmisch-Partenkirchen has many faces: Olympic venue, health resort, cultural site. Everywhere there is a story worth hearing. For example, as part of a guided tour through the historic town centers from Garmisch and Partenkirchen. A guided tour to the impressive Olympic ski jump, which is famous for its New Year's ski jumping at the Four Hills Tournament, takes you high up.



## Murnau and the Blue Land

In Murnau nature, art and culture form a special bond. The world-renowned artists Kandinsky, Münter and Horváth lived here and found inspiration in the picturesque landscape at the foothills of the Bavarian Alps with its romantic lakes and unique moorlands.

Murnau is the centre of the holiday region around Lake Staffelsee, a piece of „picture book“ Bavaria. Discover the original sites of Expressionist painting, traces of the „Blue Rider“ (a group of painters), Kandinsky in the Münter-Haus (known also as the „Russian House“) and the Schloßmuseum with the worldwide largest Münter collection. The pedestrian mall, lined with colourful listed houses, sets the scene for shopping with mountain view.

On the idyllic Lake Staffelsee you have the possibility to take a pleasure boat trip, if you wish, with a Bavarian white sausage brunch or buffet.







## Glentleiten Open Air Museum

The Glentleiten Open Air Museum is situated in the charming landscape of the foothills of the Alps.

We invite you to a varied walk through the extensive museum grounds, with its woods, meadows and historical gardens. About 60 buildings – farms, mills, alpine buildings, workshops and much more – have been reconstructed here. Complete with their entire furnishings, they convey a living picture of Upper Bavaria's past and how it has been influenced by the farming community.



## Museum of Violins in Mittenwald

The Museum of Violins shows the handcraft of violin making and its development in Mittenwald, embedded in the local history. The focus of the extensive and high-quality collection of instruments is on the Mittenwald violin making, from the Baroque masters such as Matthias and Sebastian Klotz up to the present workshops. Furthermore violins from other regions are exhibited - as for example from the world famous Tyrolean violin maker Jacob Stainer.



## State capital Munich

Visit the Nymphenburg Palace, churches and monasteries, plazas and museums or simply enjoy Bavarian flair in typical beer gardens, the English Garden, one of the largest urban parks in the world, or at any of the surrounding idyllic lakes. The Olympic Park and the Allianz Arena offer impressive architecture not just for sports fans.

Available are guided walking tours through the historic City as well as guided city tours by bus.



# //accommodation for groups//

hosts from a capacity of 20 beds or more



**Landhotel Lärchenhügel**  
Am Rainenbichl 65  
82487 Oberammergau  
20 Beds  
only breakfast



**Hotel-Gasthof zur Rose \*\***  
Dedlerstr. 9  
82487 Oberammergau  
44 Beds  
meals possible



**Gästehaus Stadler \*\***  
Rottenbucher Str. 6  
82487 Oberammergau  
20 Beds  
only breakfast



**Hotel Landhaus Feldmeier \*\*\*S**  
Ettaler Str. 29  
82487 Oberammergau  
54 Beds  
meals possible



**Hotel Garni Antonia \*\*\***  
Freikorpsstr. 5  
82487 Oberammergau  
25 Beds  
only breakfast



**Zum Turm \*\*\*S**  
Ettaler Str. 2  
82487 Oberammergau  
55 Beds  
only breakfast



**Gästehaus Otto Huber \*\*\***  
Welfengasse 8  
82487 Oberammergau  
26 Beds  
only breakfast



**Hotel Arnika \*\*\*S**  
Ludwig-Lang-Str. 21  
82487 Oberammergau  
64 Beds  
only breakfast



**Hotel Fux \*\*\***  
Mannagasse 2a  
82487 Oberammergau  
26 Beds  
only breakfast



**Hotel Alte Post \*\*\***  
Dorfstr. 19  
82487 Oberammergau  
82 Beds  
meals possible



**Gästehaus Enzianhof \*\*\***  
Ettaler Str. 33  
82487 Oberammergau  
28 Beds  
only breakfast



**Aktiv Hotel Böld \*\*\*\***  
König-Ludwig-Str. 10  
82487 Oberammergau  
104 Beds  
meals possible



**Das Posch Hotel**  
Turnerweg 4  
82487 Oberammergau  
35 Beds  
only breakfast



**Hotel Maximilian**  
Ettaler Str. 5  
82487 Oberammergau  
41 Beds  
meals possible





**Hotel Wolf \*\*\***  
Dorfstr. 1  
82487 Oberammergau  
88 Beds  
meals possible



**Parkhotel Sonnenhof \*\*\*\***  
König-Ludwig-Str. 12  
82487 Oberammergau  
125 Beds  
meals possible



**Jugendherberge Oberammergau**  
Malensteinweg 10  
82487 Oberammergau  
142 Beds  
only breakfast



**Hotel Schillingshof \*\*\*\***  
Fallerstr. 11  
82433 Bad Kohlgrub  
245 Beds  
meals possible



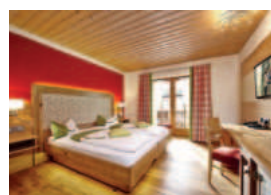
meals possible  
**Kur- und Vitalhotel Sonnen \*\*\*\*S**  
Sonnen 92a  
82433 Bad Kohlgrub  
28 Beds  
meals possible



**Das SeinZ**  
Kurhausstr. 1  
82433 Bad Kohlgrub  
85 Beds  
meals possible



**Kurbad St. Martin \*\*\***  
Prentstr. 9  
82433 Bad Kohlgrub  
28 Beds  
only breakfast



**Hotel am Wiesenhang \*\*\*S**  
Prentstr. 14 - 18  
82433 Bad Kohlgrub  
44 Beds  
only breakfast



**Ammergauer Zeitgeist \*\*\*\***  
Saulgruber Str. 6  
82433 Bad Kohlgrub  
70 Beds  
meals possible



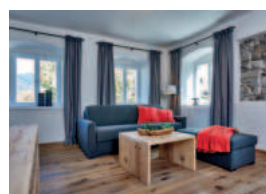
**moor&mehr, Bio-Kurhotel \*\*\*S**  
Spengelstr. 6  
82433 Bad Kohlgrub  
44 Beds  
meals possible



**Kur- und Wellnesshotel Waldruh \*\*\*S**  
Sonnen 93  
82433 Bad Kohlgrub  
31 Beds



**Boutique Hotel Lartor**  
Weiherweg 34  
82497 Unterammergau  
31 Beds  
meals possible



**Gasthof Stern**  
Pürschlingstr. 16  
82497 Unterammergau  
26 Beds  
meals possible



## Bad Bayersoien, Saulgrub, Ettal/Graswang/Linderhof

Bad Bayersoien



### Parkhotel am Soier See \*\*\*\*\*

Am Kurpark 1  
82435 Bad Bayersoien  
223 Beds  
meals possible



### Parkhotel Living

Am Kurpark 1  
82435 Bad Bayersoien  
28 Beds  
meals possible



### Bayersoier Hof

Dorfstr. 35  
82435 Bad Bayersoien  
48 Beds  
meals possible



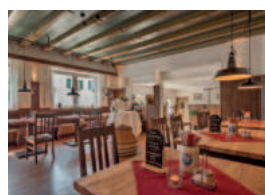
### Landhaus am See St. Michael \*\*\*

Am Kurpark 4  
82435 Bad Bayersoien  
26 Beds  
bread roll service



### Landhaus am Soier See \*\*S

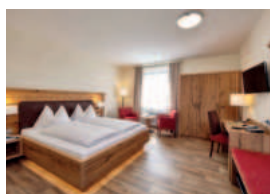
Dorfstr. 80  
82435 Bad Bayersoien  
28 Beds  
only breakfast



### Landhotel zum Metzgerwirt \*\*\*

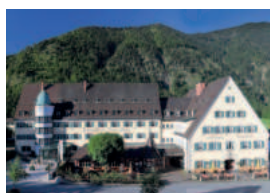
Dorfstr. 39  
82435 Bad Bayersoien  
20 Beds  
meals possible

Saulgrub



### AURA-Hotel \*\*\*

Alte Römerstr. 41 - 43  
82442 Saulgrub  
96 Beds  
meals possible



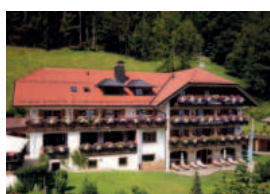
### Klosterhotel Ludwig der Bayer \*\*\*\*\*

Kaiser-Ludwig -Platz 10 - 12  
82488 Ettal  
150 Beds  
meals possible



### Alphotoel Ettal \*\*\*

Alte Bergstr. 10 + 12  
82488 Ettal  
86 Beds  
meals possible



### Hotel Blaue Gams \*\*\*\*\*

Vogelherdweg 12  
82488 Ettal  
107 Beds  
meals possible

Ettal/Graswang/Linderhof

Contact us for more information about the accommodations



## Information for coach drivers

### Petrol stations

Oberammergau	AGIP, Bahnhofstr. 6, daily 6:00 am - 10:00 pm
Bad Bayersoien	Fa. Heinritzi, Dorfstr. 5, Mon-Fri 08:00 am - 5:00 pm Sat 09:00 am - 1:00 pm Sun closed, after that costumer activated terminal
Saulgrub	V-Markt, Am Mühlbach 1, daily 6:00 am - 10:00 pm, (customer activated terminal)

### Public facilities

Oberammergau	Ammergauer Haus, Eugen-Papst-Straße 9a  Passion Play Theatre, Otmar- Weis-Str. 1  Kleines Theater, Schnitzler- gasse 6
Ettal	Ettal Monastery, Kaiser-Ludwig- Platz 1
Bad Bayersoien	Gunklstube, In der Brandstatt 12  at the south end of Lake Soier, next to Fischerstübl-Kiosk
Bad Kohlgrub	restaurant at the "Kurpark" (until 8:00 pm)  Haus des Gastes/Wandel- halle (until 5:00 pm)

### Public waste disposal

coach facilities	sewage plant Oberammergau, Feldiglasse 30 (behind Passion Play Theatre)
------------------	---

### Garage / service station

Oberammergau	Autohaus Reiter Rottenbucher Str. 1a, Tel.: +49 (0) 8822 / 92340
Garmisch- Partenkirchen	MAN Truck & Bus Deutschland GmbH, Amselstr. 3, Tel.: +49 (0) 8821 / 93210
Weilheim	Bauer Fahrzeuge und Motoren, Kfz-Werkstatt, Paradeisstr. 56, Tel.: +49 (0) 881 / 627-120

### Bus parking areas

Oberammergau	Eugen-Papst-Straße (5 min. to the center of the village), charged service  Passionstheater, Otmar-Weis-Str. 1 (1 min. to the center of the village), charged service  Ludwig-Lang-Str. 59 (Laber-Bergbahn), charged service  parking area nord/Kolbensessel bahn Talstation, charged service  parking area south/Festplatz, free (to be charged during Passion Play season)
Ettal	infront of the Monastery, Ammer- gauer Straße, free of charge
Bad Bayersoien	Trahtweg, free of charge
Bad Kohlgrub	parking area "Erle Parkplatz (1 bus) free of charge  Hörnle-Bahn-parking area (Fallerstraße, till 6:00 pm), charged service  Tannenbankerlparkplatz at the Hörnle (from 6:00 pm) charged service
Linderhof	Parking place below the palace, charged service





## Overview / prices for groups

program	group size	duration	price
<b>Guided tours in Oberammergau</b>			
"Oberammergau and its history"	max. 30 persons	60 mins	110,00 €
"Oberammergau and its passion"	16 - 30 persons up to 15 persons	45 - 60 mins	150,00 € 70,00 € + admission
"Oberammergau, its history and passion"	16 - 30 persons up to 15 persons	60 - 90 mins	180,00 € 90,00 € + admission
"Oberammergau, an artist village"	16 - 30 persons up to 15 persons	60 - 90 mins	180,00 € 90,00 €
"Romans in Oberammergau"	16 - 30 persons max. 15 persons	120 mins	200,00 € 90,00 € + admission
Spiritual guided church tour St. Peter & Paul	max. 30 persons	ca. 45 mins	80,00 €
<b>Sights in Oberammergau</b>			
Entrance Passion Play Theatre (incl. Oberammergau Museum)	from 10 persons	theatre: ca. 30 mins <sup>1</sup> museum: ca. 60 mins <sup>1</sup>	5,00 € p.p. <sup>2</sup>
Entrance Oberammergau Museum or Exhibition in the Passion Play Theatre Foyer	-	ca. 60 mins <sup>1</sup>	5,00 € p.p. <sup>2</sup> (dis- count with guest card)
House of Pontius Pilate & Living Workstudio	-	ca. 30 mins <sup>1</sup>	free of charge
<b>Ettal</b>			
Guided tour in the monastery church		ca. 30 - 45 mins	5,00 € p. p.
Monastery distillery	20-60 persons	ca. 60 mins	8,00 € p.p.
Guided tour of the Brewery	10 - 20 persons 21 - 30 persons	ca. 60 mins	12,00 € p.p. 11,00 € p. p.
<b>All about King Ludwig II</b>			
Linderhof Palace - palace and (summer <sup>4</sup> ) - palace only (winter <sup>3</sup> )		ca. 2,5 hrs ca. 1,5 hrs.	from 10,00 € p.p. <sup>5</sup> from 9,00 € p.p. <sup>5</sup>
Schloss Neuschwanstein		ca. 1,5 hrs	from 21,00 € p.p. <sup>5 2</sup>
<b>Monasteries and Churches</b>			
Pilgrimage Church of the Scourged Saviour ("Wieskirche")	from 12 persons	ca. 30 mins	free of charge <sup>7</sup>
Monastery church Rottenbuch	-	ca. 30 mins	free of charge <sup>7</sup>



program	group size	duration	price
<b>Walks, hikes and meditation in ammer valley</b>			
Meditation trail (87 km total)	5-7 days or day trips		
Crucifixion Monument	90 mins from Oberammergau and return		
Döttenbichl (Celtic ritual place and historic Roman site)	120 mins from Oberammergau and return		
Herbal walk	max. 25 persons		from 12,00 € p.p.
Guided tour with Nature Park rangers	max. 15 persons	ca. 4 hrs	free of charge <sup>7</sup>
<b>Further offers in the Ammergau Alps</b>			
Guided walks and nature tours, snowshoe walks	depending on program	depending on program	
Visit of one of the oldest distilleries in Bavaria, in the "Jägerjörgl"-estate (Bad Kohlgrub).	ab 10 persons	ca. 1 hrs - 1,5 hrs	from 15,00 € p. p.
Guided Tour at the historic bridge "Echelsbacher Brücke" between Ammergauer Alps and Pfaffenwinkel	max. 15 persons	ca. 1 hrs	from 3,00 € p. p.
Forest bathing			from 10,00 € p. p.
Archery course	max. 8 persons	ab 1 hrs	from 23,00 € p. p.
Exclusive organ recital at the parish church St. Peter and Paul or in the protestant church Kreuzkirche	max. 150 persons	30 mins	from 80,00 €
Watch soap production live at soap manufactory Wurm	max. 20 persons	30 - 45 mins	free of charge <sup>7</sup>
Wood carving taster course	max. 8 persons	ca. 2 hrs	from 29,00 € p.p.
<b>Excursions in the region</b>			
Open Air Museum Glentleiten in Großweil	from 15 persons		7,00 € p. p.
Museum of violins in Mittenwald	10 to 25 persons		from 50,00 € + admission 4,50 € p. p.
Guided group tour			
Zugspitze mountain winter 21/22	from 15 persons	ca. 4 hrs	from 58,50 € p.p.
Zugspitze mountain summer 22	from 15 persons	ca. 4 hrs	from 58,50 € p. p. (with reservation)
<b>personal guide full day</b>	up to 50 persons	up to 8 hrs	from 290,00 €
<b>personal guide half day</b>	up to 50 persons	up to 4 hrs	from 190,00 €

<sup>1</sup> suggestions for your time plan, <sup>2</sup> coach driver and tour guide free (proof may be required)

<sup>3</sup> winter: Mid-October to Mid-April, <sup>4</sup> summer: Mid-April to Mid-October, <sup>5</sup> 10 % reservation fee apply, <sup>6</sup> service fee applies,

<sup>7</sup> donations welcome (3,00 € p. p.)

**Please note: All data has been carefully researched. However, no guarantee can be given for their correctness. All prices and information are subject to change.**





Ammergauer Alpen GmbH  
Eugen-Papst-Str. 9a  
82487 Oberammergau  
08822/922740  
[info@ammergauer-alpen.de](mailto:info@ammergauer-alpen.de)